



Public Health  
England

# Annual Health Protection Profile for Barnet, 2014

Dr Tania Misra, Consultant in Health Protection,  
NE & NC London Health Protection Team, PHE  
4th<sup>th</sup> June 2015



Public Health  
England

# Infectious Diseases in Barnet

The total number of infectious diseases reported from Barnet to the NENCL health protection team was higher in 2014 (773) compared with 2013 (676).

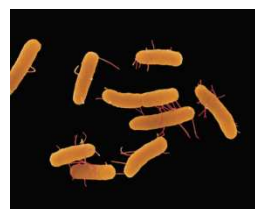
A 3-fold increase in scarlet fever notifications (75 vs 26)



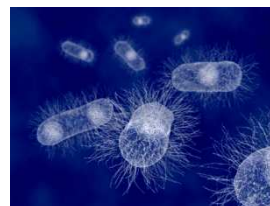
A doubling of mumps notifications (75 vs 38) in 2014, compared to 2013



Salmonellosis (64 in 2014, 48 in 2013)\*



Shigellosis (40 in 2014, 34 in 2013)



VTEC E.coli (15 in 2014, 9 in 2013)



Reduction in the number of reported measles cases in Barnet (9 cases reported in 2014, 32 cases reported in 2013)



# Health Protection Incidents and Outbreaks in Barnet

- In 2014 there were 45 health protection related incidents and outbreaks in Barnet, reported to the NENCL Health Protection Team.
- Most of these were associated with schools, nurseries, hospitals, workplace.
- The most common causes of incidents and outbreaks were:
  - Norovirus or gastrointestinal illnesses (12)
  - Tuberculosis (10)
  - Varicella / Chickenpox (6)
  - Scarlet fever / rash type illness (4)
  - Conjunctivitis (2)
  - Influenza (2)
  - Environmental exposures (4)



# Immunisation Coverage in Barnet

Table 1. Immunisation coverage in Barnet at 12 m, Q3 2014

	<b>12m DTaP/ IPV/ Hib%</b>	<b>12m MenC%</b>	<b>12m PCV%</b>
Barnet	<u>85.0</u>	<u>86.6</u>	<u>84.1</u>
London	90.0	92.7*	90.3
England	94.1	95.5*	94.0

\*Q 1 data available only for London and England for 12 m Men C



# Immunisation Coverage in Barnet

Table 1. Immunisation coverage in Barnet at 24 m, Q3 2014

	<b>24m_ DTaP/IPV / Hib%</b>	<b>24m_ PCV B%</b>	<b>24m_ Hib MenC%</b>	<b>24m_ MMR 1%</b>
Barnet	<u>84.2</u>	<u>78.1</u>	<u>77.9</u>	<u>78.3</u>
London	92.3	85.5	86.1	86.0
England	95.6	91.9	91.8	91.8



# Immunisation Coverage in Barnet

Table 1. Immunisation coverage in Barnet at 5 y, Q3 2014

	5y_ DTaP/ Pol%	5y_ MMR1%	5y_ MMR2%	5y_ DTaP/ IPV B%	5y_Hib MenC B
Barnet	<u>93.6</u>	<u>90.6</u>	<u>71.6</u>	<u>70.7</u>	<u>87.1</u>
London	92.8	91.2	80.5	78.0	87.3
England	95.8	94.6	88.5	88.0	92.7



# Immunisation coverage in Barnet

## Human Papilloma Virus (HPV) vaccine uptake (2013/14) –

Coverage of HPV vaccine for all 3 doses in Barnet (69.5%) has improved considerably compared to coverage in 2012 (62.1%)



It is still the fourth lowest in NENCL and is 10% lower than the London average (80.0%) and 17% lower than the England average (86.7%).

School nursing teams are working hard to ensure optimal coverage of this important vaccine.





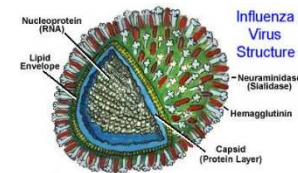
# Immunisation coverage in Barnet

## Seasonal influenza immunisations in over 65s:

Looking at the period between September 2014 and January 2015 - Barnet - with **70.9%** coverage - performed better than the London average of **69.2%**. However, this was slightly below the national average (**72.8%**).

The coverage in at-risk groups (6 m to 65 yrs) was **48.4%**, compared to a London average of **49.8%** and an England average of **50.3%**

The coverage in pregnant women was **37.8%**, compared to a London average of **39.9%** and an England average of **44.1%**



(source:

[https://www.gov.uk/government/uploads/system/uploads/attachment\\_data/file/407946/2903322\\_SeasonalFlu\\_GP\\_Jan2015\\_acc2.pdf](https://www.gov.uk/government/uploads/system/uploads/attachment_data/file/407946/2903322_SeasonalFlu_GP_Jan2015_acc2.pdf)

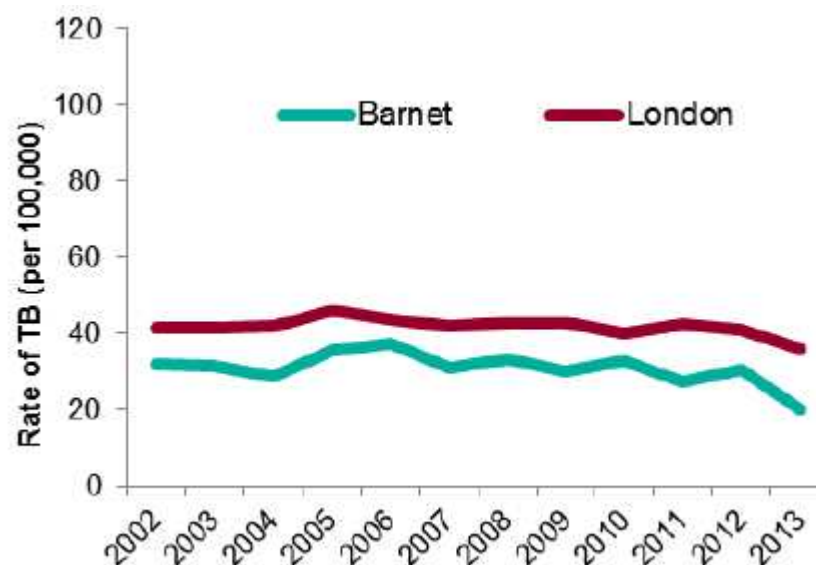




# Tuberculosis in Barnet – 2013 data

- 76 TB cases reported in Barnet in 2013
- 343 TB notifications from NC London, and 3020 cases of TB in London
- Rate = 20.9/100,000 population (London rate = 36.3/100,000 (range = 6 - 107))
- 59% of cases had pulmonary involvement
- 3.9% of TB cases had social risk factors
- A small number of TB cases were infectious
- Two contact tracing exercises were undertaken in 2014, in order to offer screening to those who were exposed

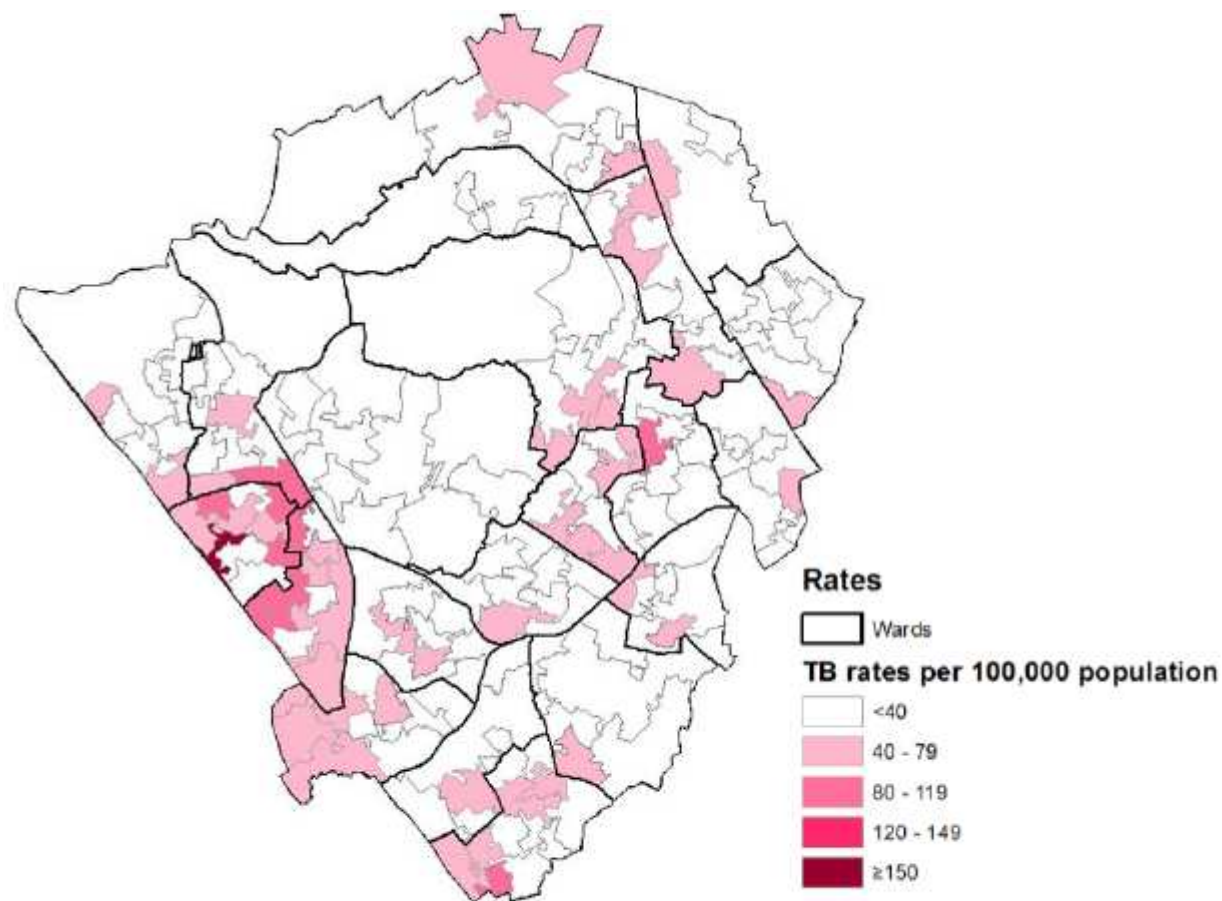
Annual TB incidence rate





Public Health  
England

# 3 year average TB incidence rate by Lower Super Output Area:2011-2013



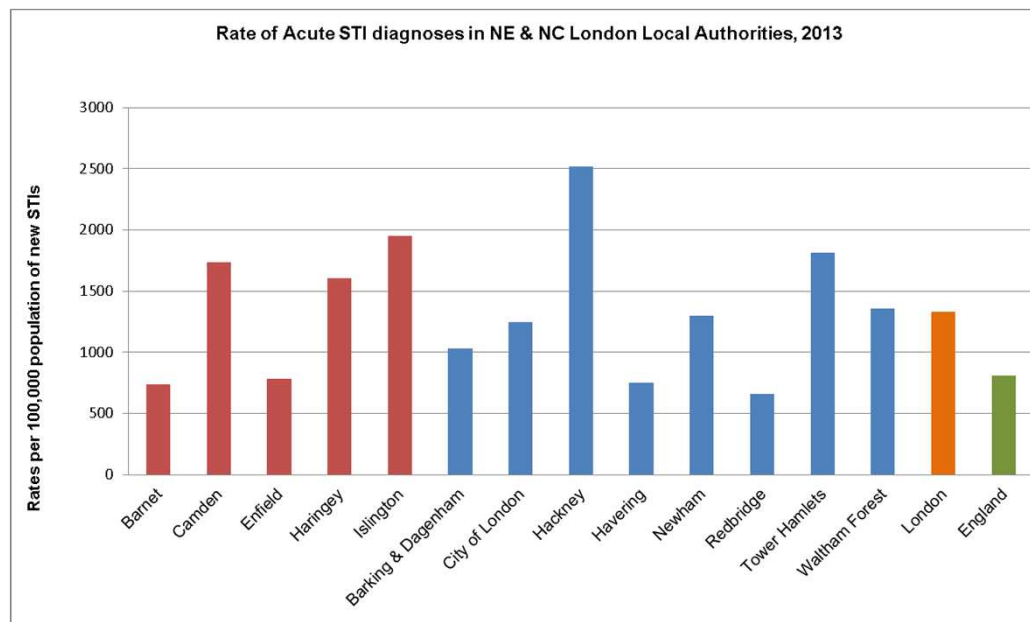
Contains Ordnance Survey data © Crown copyright and database right 2014.  
Contains National Statistics data © Crown copyright and database right 2014.



# Sexually Transmitted Infections in Barnet, 2013

- 2676 acute Sexually Transmitted Infections (STIs) were diagnosed in residents in 2013
- Males = 1440
- Females = 1236
- Acute STI Rate = 736.4 per 100,000 residents
- (males 812.9, females 661.7)
- London rate = 1332/100,000
- England rate = 810.9/100,000.

Rates of STI diagnoses in NENCL, 2013

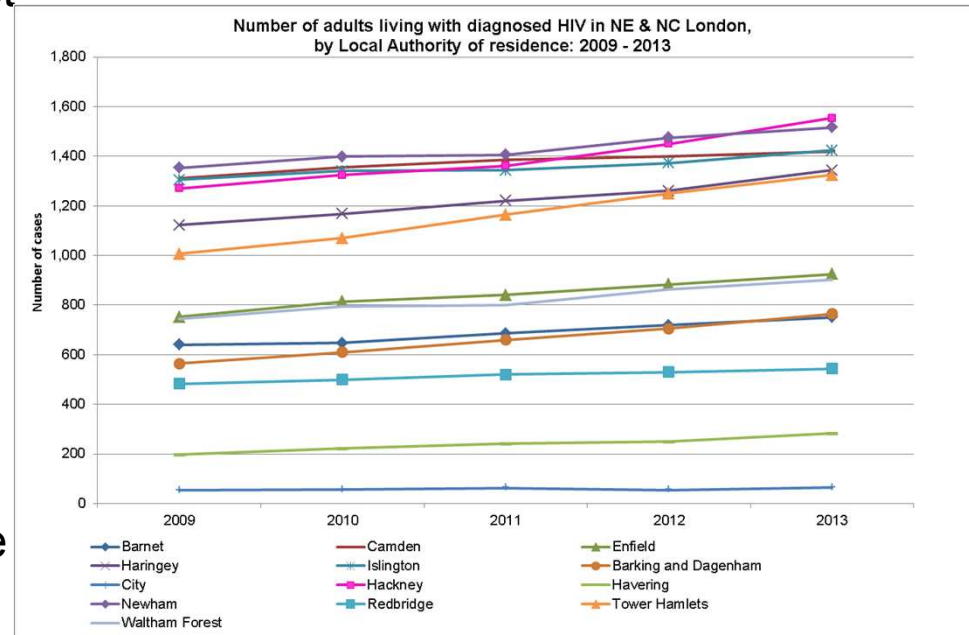


Chlamydia detection rates in young adults aged 15-24 in Barnet are considerably lower than the England average (1098 compared with 2016) and one of the lowest in NENCL



# HIV in Barnet – 2013 data

- Similar to all boroughs in North East and North Central London, Barnet has seen a rise in the number of people living with HIV over the last five years
- The number of people living with HIV and known to NHS and Social Care services has increased from 640 in 2009 to 750 in 2013. This represents a 17% increase over the 5 year period
- The main route of acquiring HIV infection in this group is through heterosexual sex





## HIV in Barnet – 2013 data

- The proportion of people presenting with HIV at a late stage of infection – (proportion of adults aged 15 years or more diagnosed with a CD4 cell count less than 350 cells per mm<sup>3</sup> among all newly diagnosed adults with CD4 cell count available within 91 days of diagnosis and with known residence based information) improved in Barnet in 2013 (51.5%), compared to 2012 (55.5%)
- However, the Barnet HIV late diagnosis rate (51.5%) is higher than the England average (45.0%) and approximately double the rate of the best performing boroughs in NENCL (Islington rate = 25.9%, and City of London rate = 23.0%).